

# Let us know your thoughts

## Buntingford, Parkside Consultation



**Hallam Land Management is bringing forward a planning application for the development of Buntingford, Parkside. The site comprises around 89 hectares of land to the west of Buntingford, adjacent to the A10.**

We want to hear your thoughts on the proposals and how it can best benefit you as a resident of the community. We are holding an in-person drop in event on Wednesday 31 January to give you an opportunity to view the proposals, provide your feedback and meet the project team. Further details can be found below.



Artists impression  
of the site



Neighbouring location



Neighbouring location

### Key benefits



Up to 600 new homes – including policy compliant levels of affordable housing to assist with East Herts' housing shortfall.



Creation of a new public Buntingford Park for the whole town, with wildlife enhancements, potential for sports pitches and a wider network of public open space throughout the site.



An integrated development with Buntingford, through improved connections and access to the new park for existing residents.



Employment land to support new and existing businesses.



Potential for an onsite doctors surgery.



Improvements to local bus services.



A new local centre & community hub.



A First School site.



Dedicated accommodation for older residents.



Land for a potential solar farm to deliver green energy.

### Community engagement event

**We are holding a drop-in community engagement event which will give you an opportunity to see the proposals in greater detail and ask any questions to members of the project team.**

The details of the event can be found below:



Where:

**The Bury, London Road,  
Buntingford, SG9 9HZ**



When:

**Wednesday 31 January 2024  
3.00pm - 8.00pm**

We look forward to seeing you there.



Precedent image for the design of these proposals

## About the site

The site is located to the West of Buntingford and runs adjacent to the A10 to the south of Throcking Lane and also south of the A507, Baldock Road.

The developed areas of the site will utilise accesses from Throcking Lane and the A507, with strong links to the A10 and sustainable transport options through public transport, walking and cycling.

The proposals will provide a publicly accessible green network of open spaces to help enhance public access to the countryside. This will be delivered through a broad network of public open spaces providing opportunities for parkland and also formal playing pitches.



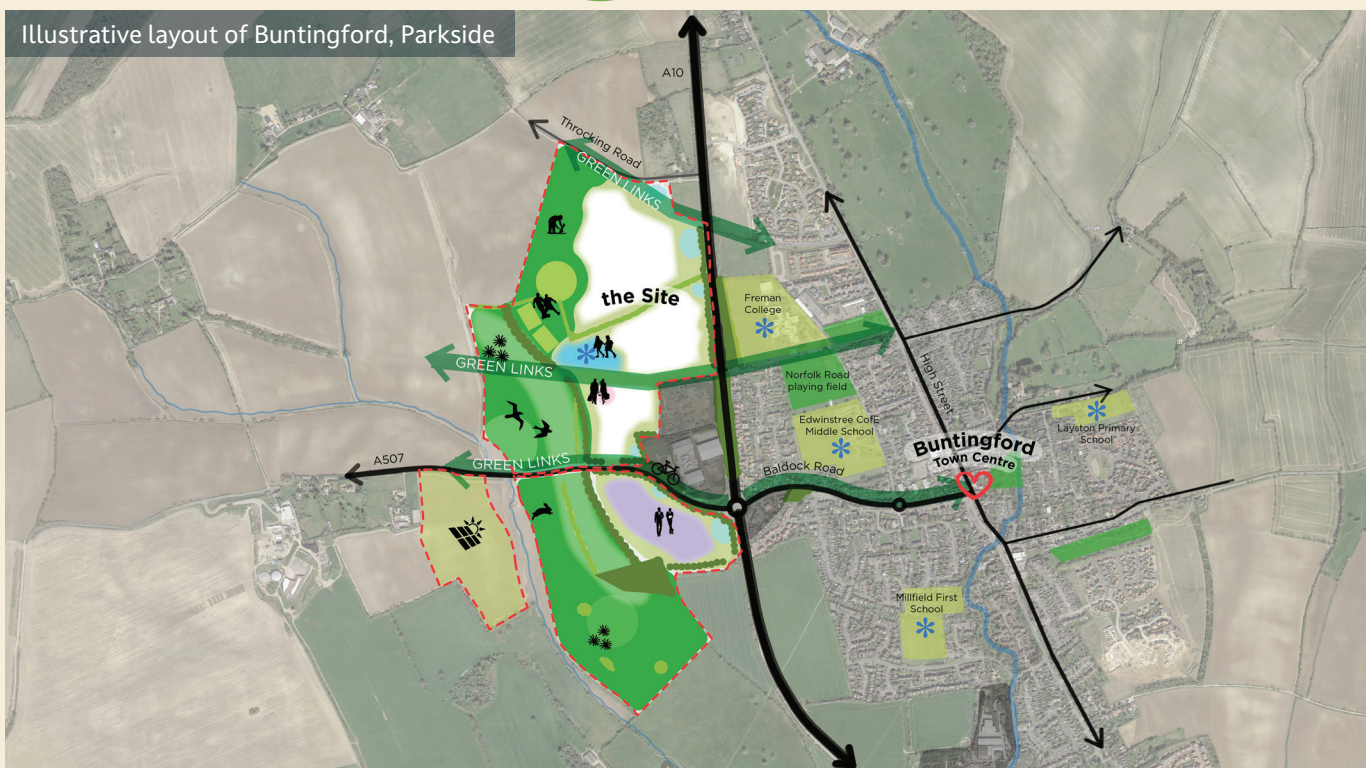
## About Hallam Land Management

Hallam Land Management is a strategic land promoter covering the whole of the UK. We put our investment, knowledge and time into delivering homes and places to work, creating future communities in sustainable locations.

We balance the need for new homes, alongside the need for infrastructure and the changes development brings to the local community and environment.

We have an honest, collaborative and personal approach, forming close partnerships with landowners, key stakeholders and communities. Through our skills and commitment, we aim to deliver positive and sustainable benefits for local communities and the environment.

Illustrative layout of Buntingford, Parkside



## Get in touch

Contact us directly to provide your thoughts or any questions you may have by using the details adjacent.



You can view our website by scanning the QR code or visiting [www.buntingfordparkside.co.uk](http://www.buntingfordparkside.co.uk)

The website will be live from 31 January 2024.

Call us on our dedicated Freephone line:  
**0800 148 8911**  
(Monday-Friday 9.00am - 5:30pm)

Email us at: [buntingford@marrons.co.uk](mailto:buntingford@marrons.co.uk)

Write to us at:  
**Freepost MEETING PLACE CONSULTATION**  
(no stamp is needed)