



Edwinstree Middle School
A Voluntary Controlled Church of
England School

**NEWSLETTER for PARENTS &
CARERS**

Week Ending: 26/01/2024

Edwinstree Term dates:

<https://www.edwinstree.herts.sch.uk/school/term-dates.aspx>

Homework Week: B

Diary Dates:

School Day – 8:40am – 3:10pm	
5-8/02/24	Year 6 Mock SATs
09/02/24	ESA Family Quiz 6.30pm
13/02/24	Bake Sale – cake donations welcome
16/02/24	Year 6 Safe and Well Education Sessions
19-23/02/24	Half Term
26/02/24	6A & 6C Academic review via SchoolCloud
29/02/24	6B & 6D Academic review via SchoolCloud
13/03/24	Fullness Day (details to follow)
18/03/24	Year 5 Foundation Evening in person
28/03/24	End of Spring Term 1:20pm
15/04/24	Start of Summer term 08:40am
22/04/24	Year 6 Foundation Evening in person
06/05/24	Bank Holiday
13-16/05/24	Year 6 SATs Week
20/05/24	Year 7 Foundation Evening in person
27-31/05/24	Half Term
17/06/24	Year 8 Foundation Evening in person
28/06/24	INSET Day
11/07/24	County Transition Day
19/07/24	End of Summer Term 1:20pm



Non-uniform day Friday 26th January for the Isabel Hospice A large thank you to those

parents/students who donated to the Isabel Hospice Charity, we have raised £348.00

Bake Sale

On Tuesday 13th of February we will be hosting a bake sale to help raise money to support our first Fullness day. These are learning days that happen throughout the year, 3 in total to explore topics that students have raised as of interest and/or importance. The dynamic diversity group have requested a day to explore and learn about differently abled people and neuro diversity, in order to boost our whole schools understanding of difference. This will take place in March, but to support some outside agency speakers, we would like to raise a little money to help. Hence the need for a bake sale. As always donations can be dropped to the school during this week. Thank you to the amazing bakers and kind buyers who help us to raise funds for projects inside and outside the school.

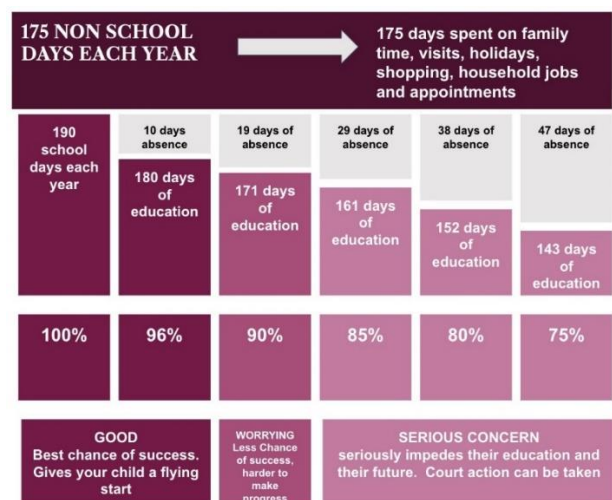
Why is attending school so important?

The school is currently paying extra care and attention to attendance, and while we will offer all the support we can to help reduce your child’s anxieties, or listen and support you to do the work at home to get your child into school, we wanted to make sure you are clear the damage that can happen when a child is not attending school.

Did you know that:

- a child who is absent for 1 day of school per week misses an equivalent of two years of their school life.
- 90% of young people with attendance rates below 85% fail to achieve five or more good grades of GCSE and around one third achieve no GCSEs at all.

We also know that if your child is anxious, staying at home feels like it helps first thing in the morning but then the problem grows and grows, bringing your child into school supports them to address their worries. We are always here to give you a cup of tea and listen to you, we are not here to judge. Many of us have experienced this in our own children.



*As a Christian school we recognise the unique and wonderful in everyone.
As a community we support one another to flourish and live life in all its fullness.*

Can you help us with a campaign to upgrade our new crossing?

We have been asking our local Council for a crossing on Bowling Green Lane for years, and this year the Council have provided one. However, it is not to the standard of the crossing we were hoping for, and while the children know it is there, the cars do not. In fact, it is so inconspicuous that parents have remarked that it is almost causing more dangers being there than not. We are looking for an upgrade to a zebra crossing with road markings and flashing beacons which both pedestrians and car drivers can not miss. Could you help? We would like to go back to the Council with a set of signatures advocating for this upgrade. If you are willing to support us by signing our petition, students will be bringing home a copy of our **petition signature early next week** and we would ask you to complete the form yourself and ask other interested parties if they would also support us (over 18's only please). Additional signature sheets will be available to collect from the school office. We would appreciate any assistance or ideas to help support our campaign.

Year 6 Safe and Well Education Sessions - Friday 16th February:

This Community Safety Day for Year 6 is now confirmed for the last Friday before half-term. (more info to follow)

Year 6 Mock SATs week – 5th to 8th February

This is an opportunity for staff and students to have a run through before they take their exams in May. The practice tests take place from Monday to Thursday during periods 1 & 2, students will then continue with their normal timetable for the rest of the day.

Please ask your child to arrive at school at 8.30am, we will provide your child with a small snack and a drink.

Please ensure that your child has plenty of rest the night before and goes to bed at a reasonable time

Year 8 English

Our Year 8 students have been studying persuasive writing on the theme of conservation. As part of this unit, they recently wrote persuasive letters to our local MP about the need to protect our local chalk streams, a very rare and ecologically important habitat. There are only 240 of these chalk streams around the world, of which 10% are found in Hertfordshire. This week the students received a very complimentary letter back from Sir Oliver Heald MP, praising their enthusiasm and persuasive writing skills (attached).

Food and Nutrition

All classes are coming up to their final practical lessons in the next 2 weeks. Please make sure your child has their ingredients in a labelled container - there are 16 classes cooking and if ingredients are not labelled, we have confusion when it comes to handing out fridge stored ingredients. *The classes will be swapping from Food to D&T (and vice versa) after the half term holiday. More information to follow.*

- **YEAR 5:** Jam packed fridges of fresh fruits which were then turned into the most wonderful fruit salads. A very well done to all classes on their spectacular results - we definitely created a rainbow in more than one way. Well done all. Cheese taste testing next week so no ingredients needed.
- **YEAR 6:** We were all quite surprised at how delicious our reduced sugar fruit alternate cakes came out. Some excellent examples and fabulous flavours. Who knew that replacing sugar could have these results?
- **YEAR 7:** Demo next week, no ingredients needed.
- **YEAR 8:** We've been looking at the impact food waste has on the environment. No practical next week.



How are we supporting students with their mental health this week?

Roman Kemp and Here4you charity held a live video link on Thursday, to support students to make sure that they are noticing when they are low, and making sure that they are able to share and talk to someone. We have included the video link [Here4You; A short film hosted by Roman Kemp that tackles young people's mental health - YouTube](#) The support webpage also includes lots of support for students if they are feeling their mental health is dropping. [Here4You - Get support](#)

ECO Warriors – RSPB Bird Watching

Our Eco team took part in the Bird watching annual event to count the number of birds we can see over set periods of time.

*As a Christian school we recognise the unique and wonderful in everyone.
As a community we support one another to flourish and live life in all its fullness.*



Edwinstree School Association

Unfortunately, our regular quiz master is now unavailable to host the Family Quiz on 9th February. We are therefore looking for a

confident, charismatic quiz master to help us out. Are you that person, or do you know someone who is? The questions are set, the drinks are on ice and there is still space for a few more teams (or individuals). Please get in touch with the school office or email us at EdwinstreeSchoolAssociation@outlook.com if you could help.

Family Quiz on Friday 9th February 6.30pm at school. Everyone is welcome, you just need at least one child (suggested age 8+) and one adult per team with a maximum of 8 team members, £20 entry per team. Individual tickets are also available to make up a team on the night. There will be a licensed bar and cash prizes to win. Tickets available from [Family Quiz Tickets \(sumupstore.com\)](http://FamilyQuizTickets(sumupstore.com)).

We are also busy planning an adult only event on 15th March, a school disco in May and an official opening ceremony for the outdoor classroom. If you would like to get involved with these or have ideas for any other events, please get in touch.

Mrs J Gant – Headteacher

admin@edwinstree.herts.sch.uk

Consultation with the new housing development.

You may be aware from the leaflets that are being circulating of a proposal for a large housing development the other side of the A10. There is a public consultation taking place next Wednesday from 3pm till 8pm at the Bury. It is in the very early stages of planning permission. The company approached us to talk to us. While we are not advocating for or against the development currently. Our school has been given the opportunity to share the students voice about a large proposed park land that will be part of the development. We think this is too good an opportunity to miss. So, our Eco team have been creating a questionnaire which will be sent out on Monday to complete, just focusing on the potential of the park and what they would wish to see and asking about other leisure facilities they would benefit from. Because of the short turn around we are distributing this through show my homework. If you would like to support your child in completing this form, please look out for the questionnaire in their SMHW inbox, or they can take a hard copy home on Monday. Due to seeing the developers late last week our turn around is short and the questionnaires need to be back in by Wednesday morning. Attached is the development plan.

Mindful Parking Please

Please may we ask that when collecting your child from school, you are mindful of parking on Greenways and blocking residents' driveways. We have a request from the residents to alert you.

*As a Christian school we recognise the unique and wonderful in everyone.
As a community we support one another to flourish and live life in all its fullness.*