

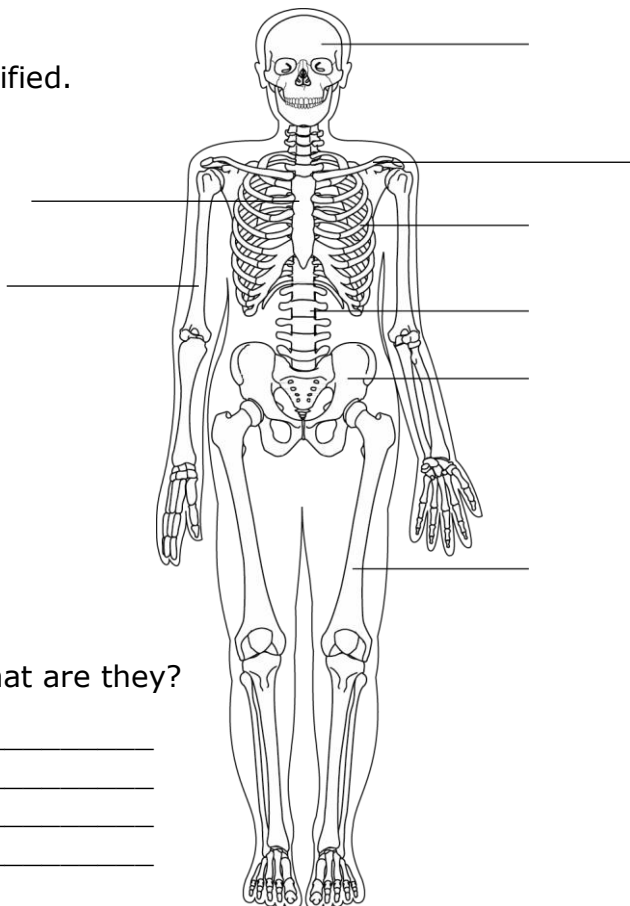
Revision sheet year 7. The Human Body

Approximately how many bones does a human child have? _____

How many does a human adult have? _____

What has happened to these bones? _____

Label the bones identified.



The Skeleton has 4 main functions. What are they?

1. _____
2. _____
3. _____
4. _____

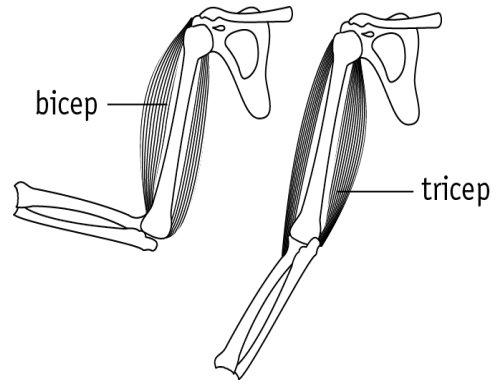
Identify 3 organs that are protected by the skeleton and say which part of the skeleton protects them.

1. _____
2. _____
3. _____

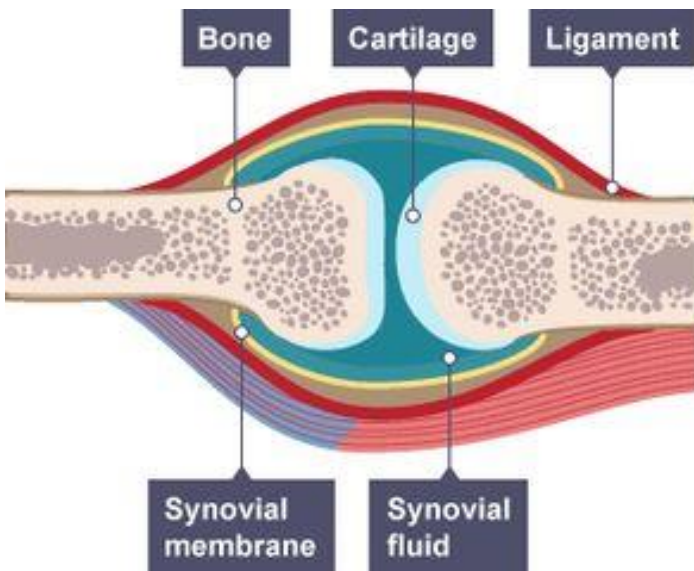
What are the different types of muscle found in a human body and where are they found?

Revision sheet year 7. The Human Body

Explain how the two muscles labelled can bend the lower arm and how they straighten it.



What do we call a pair of muscles that work together like this?



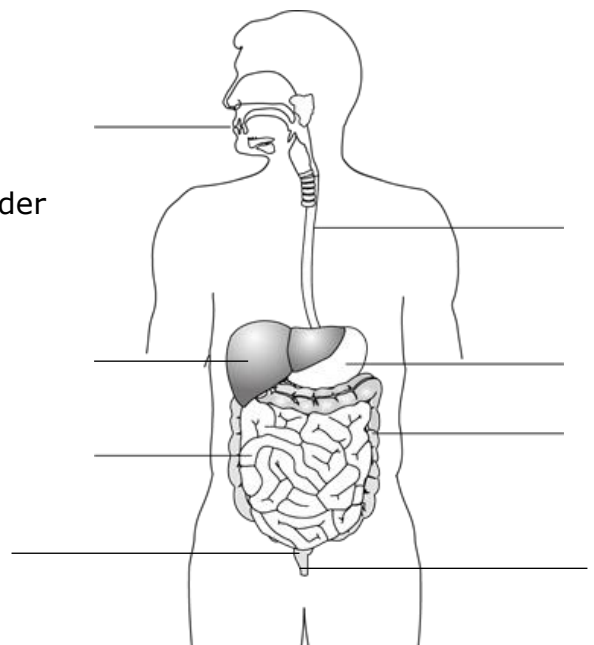
What is the role of the cartilage?

What disease would you get if the cartilage all wore away?

What is the Job of the synovial fluid?

Label the diagram of the digestive system.

Place a mark and label where you think the gall bladder would be.



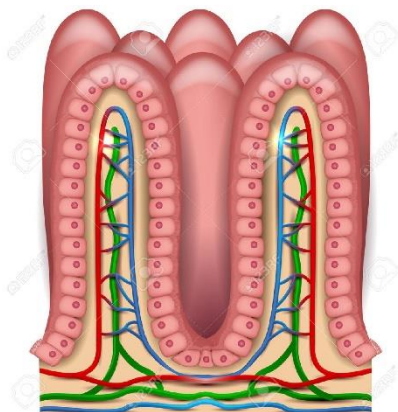
Revision sheet year 7. The Human Body

Identity the

| Food Group | What are they broken down to in the body? | Function in the body. | Example of a food that is high in this food type |
|-------------------|---|-----------------------|--|
| | | | |
| | | | |
| | | | |
| Fibre | | | |
| water | | | |
| Vitamins/minerals | | | |

What are enzymes?

What do enzymes do in the body?



What are Villi? _____

Where are they found? _____

What is their job? _____

How are they adapted to enable them to do their job?

| Test for: | Method | Positive result |
|-----------|--------|-----------------|
| starch | | |
| glucose | | |
| fat | | |

